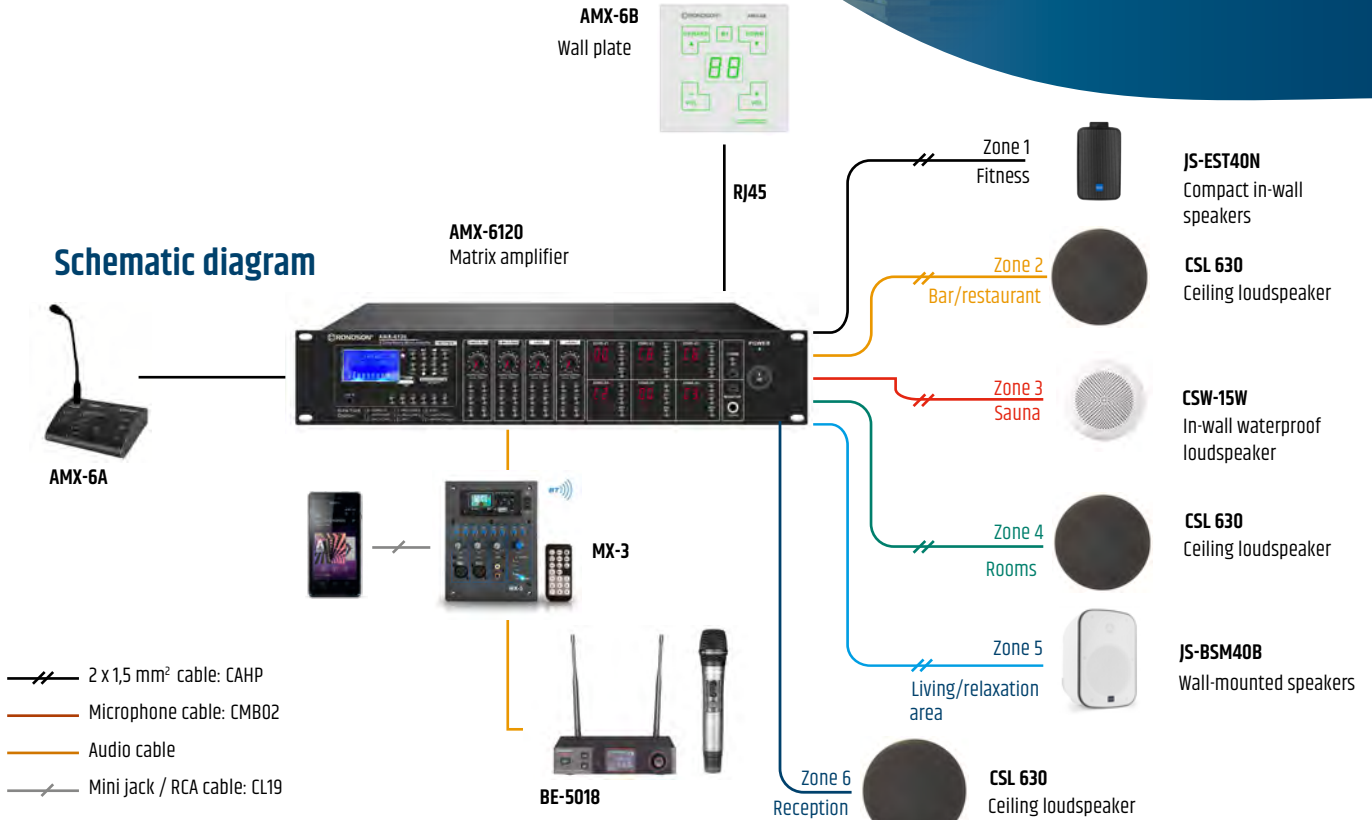


PUBLIC ADDRESS SOLUTION

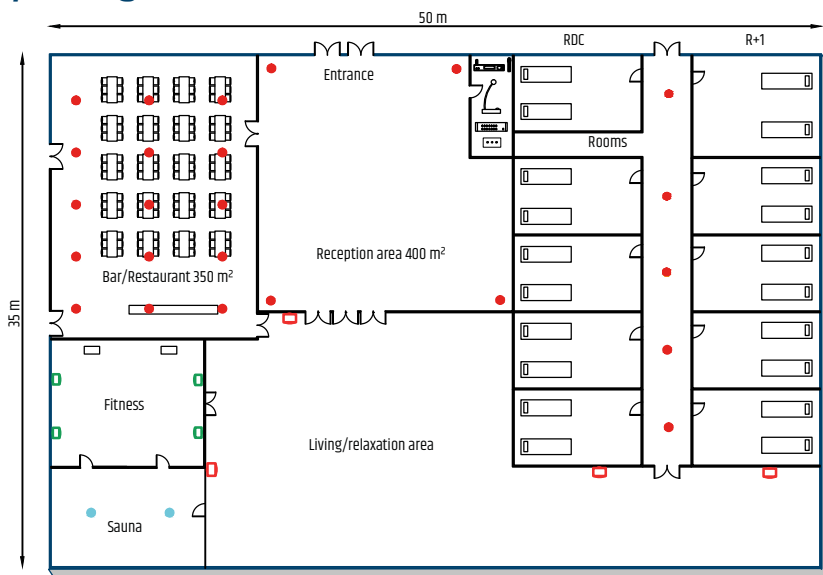
# HOTEL

Hotels require a multi-zone installation, so the user can control the sound diffusion or voice messages differently in each zone.

## Schematic diagram



## Layout diagram



- Call station AMX-6A
- Wireless microphone BE-5018
- Amplificateur AMX-6120
- Wall-mounted preamplifier MX-3
- Wall speakers JS-BSM40B
- Waterproof speaker CSW-15W
- Ceiling speakers CSL 630
- Wall-mounted speakers JS-EST40N

### Advantages

- Power 6 x 120 W
- Coverage area 1 000m²
- Individually adjustable zones
- USB / Bluetooth multimedia player