

NEW

HORN SPEAKERS

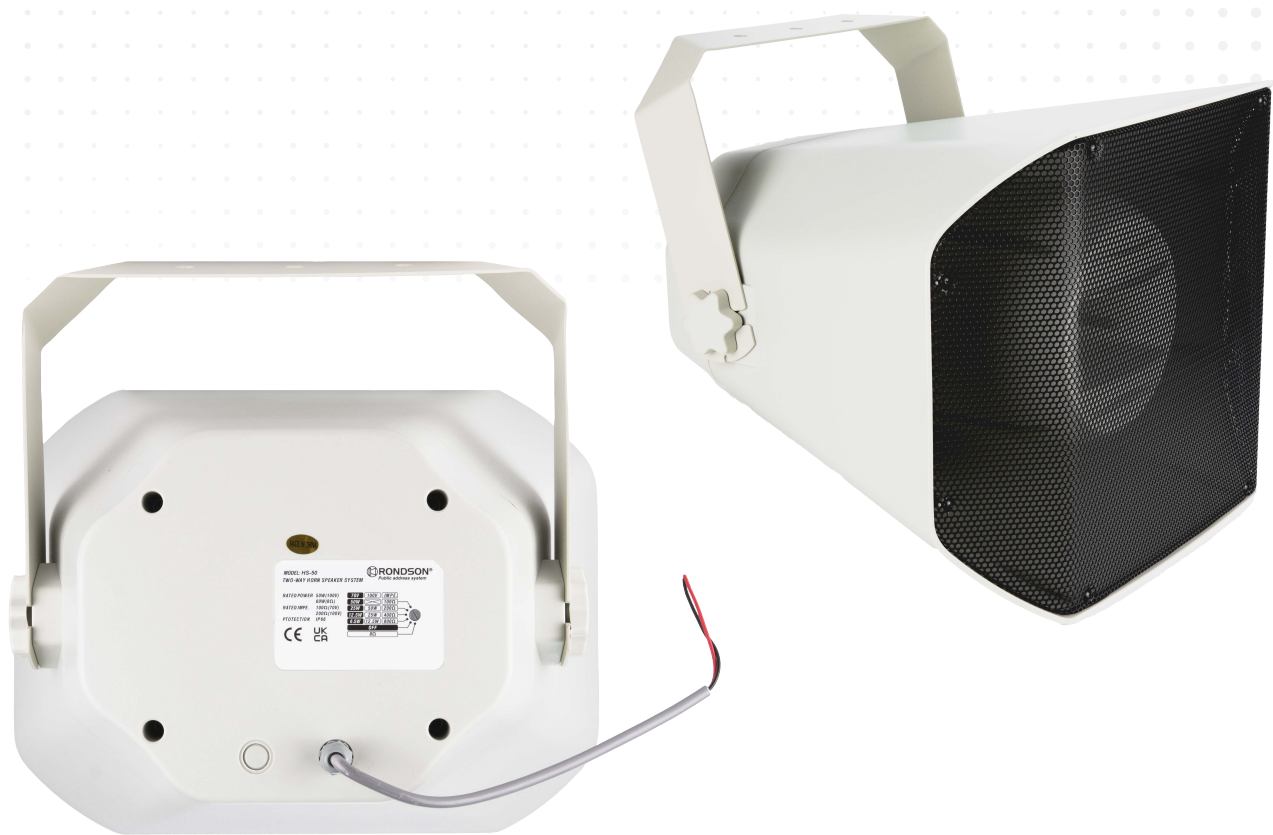
HS-50

12,5 W
25 W
50 W

100 V

2 WAY

IP66



DESCRIPTION

- Compact 2-way horn speaker that combines the sound pressure and waterproofing of a compression chamber driver with the acoustic quality of a 2-way system.
- Perfectly suited for applications requiring high speech intelligibility and good musical quality

APPLICATIONS

- Aquatic centers, Exhibition parks, Beach surveillance systems

FEATURES	HS-50
Type	2-way horn speaker
Material	ABS
Color	White
Speakers	15 cm – 6.5" + 1.5" compression tweeter
Sound Pressure Level (1 W / 1 m)	97 ± 3 dB
Frequency Response	200 – 20 000 Hz
Coverage Angle	90° x 120°
Power Output (100 V line)	50 – 25 – 12,5 W
Line Impedances (100 V)	200 / 400 / 800 kΩ
Wiring	Wired (cable gland)
Dimensions (W x D x H)	370 x 385 x 315 mm
Weight	5.6 kg
Ingress Protection	IP66

MODEL DESIGNATION

2-way horn speaker **HS-50**
(code 02829)