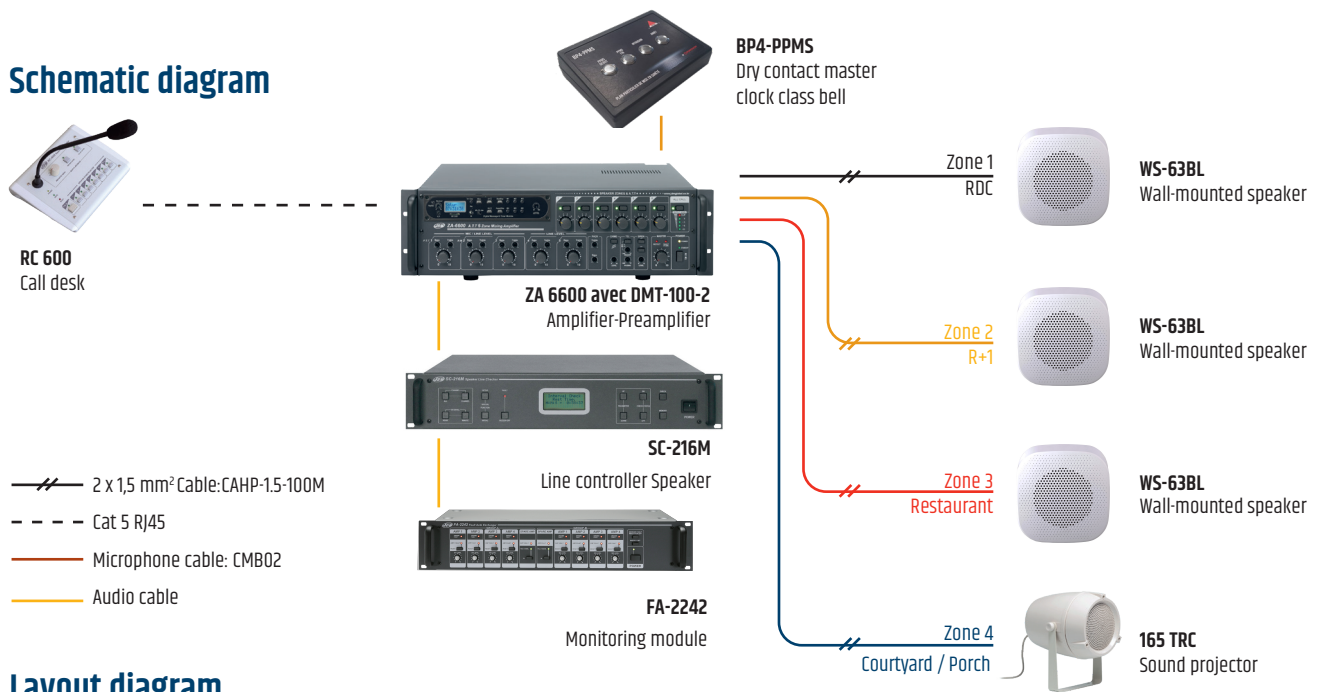


SOUND SOLUTION

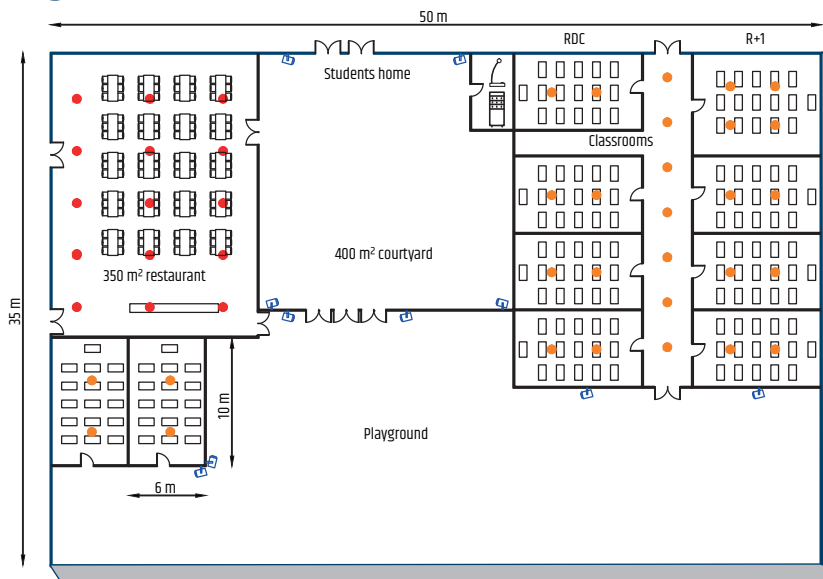
# SCHOOL COLLEGE

Every school needs to be able to handle calls, bells and emergency evacuations from different buildings. That's why we recommend installation in several zones. Our different systems meet the requirements of a PPMS (Plan Particulier de mise en sûreté), offering solutions tailored to the specific needs of your establishments.

## Schematic diagram



## Layout diagram



### Advantages

- 6-zone amplifier
- Power 600 W
- Coverage area 1750 m<sup>2</sup>
- Individually adjustable zones
- Pre-recorded message player
- System control and monitoring

